

# ICW Medical Device Mounts

2018



ICW Quality,  
Selection and Service.  
Made in the U.S.A.



ULBV-DBNK2-W2-A1



DBWA1-W2-A1 with optional hooks

*ICW now has a wide selection of medical device mounts*



UL180-DBGE3-W2 with optional handle



DBPH1-W2-AS1

**ICW** Medical Device Mounts



Smart Mounts. Ergonomic Comfort. Solid Support.  
MADE IN USA

Call for information  
**1-800-558-4435**  
Or visit [www.icwusa.com](http://www.icwusa.com)

# Select the components that meet your needs



**DBPH1-W2-AS1**



**DBWA1-W2-A1**



**UL180-DBGE3-W2**  
with optional handle



**UL180-DBGE3-W2**  
with optional handle  
and cable hook



**ULBV-DBNK2-W2-A1**



Mindray cart with  
Nihon Kohden Life Scope G9  
on Ultra 180 arm  
**UL180BV-DBNK2-W2-A1-AS1**  
(shown on left side)

**UL180EV7-KUB-W2-A1**  
(shown on right side)

*ICW brackets fit most medical devices including Mindray, Nihon Kohden, Welch Allyn, GE and Philips.*

## DEVICE BRACKETS



**DBPH1** with optional hook  
and/or handle (not shown)



**DBWA1** with optional hook  
and handle (not shown)



**ULBV-DBNK2**



**DBGE1** with optional hook  
and handle (not shown)



**UL180-DBPH4-W2**

Please contact us for an evaluation unit

### ADJUSTABLE WALL BRACKETS

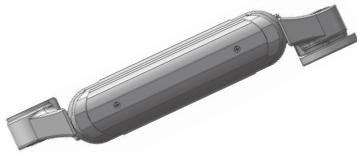


W2

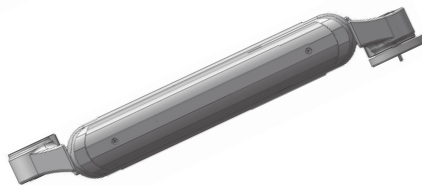


W3

### ARTICULATING ARMS



Ultra 180  
Articulating arm  
with 13.5" of reach



Ultra 182  
Articulating arm  
with 17.5" of reach

### EXTENSION ARMS

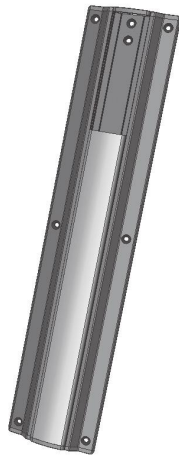


AS1  
Rigid arm with  
6" of reach



A1  
Rigid arm with  
10.5" of reach

### TRACKS



Track available in 19", 26", 36" and 50" standard lengths.  
Custom lengths also available.

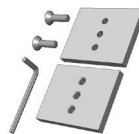
### TRACK ADAPTERS



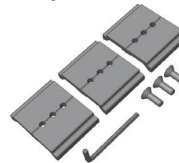
DODT Channel  
Track Adapter



TAW2 DRAEGER KIT



TAW2KIT  
Universal  
Flat Adapter



TAMD18KIT  
Raised Track Adapter

### OPTIONAL AMMENITIES



Device Cable Hook  
CH1



Small Triangle Handle  
THBVD



AMDT  
Track Adaptor



Placement of medical device on ICW track

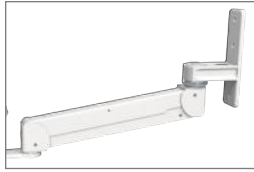
# Mount medical devices to any ICW mounting solution

Many standard and custom configurations available.



## Ultra 180 & 182

The most versatile short arm in the world. Available in all our mounting options.



## Elite

Effortless movement and maximum reach. Available in all our mounting options.



## MD

The best counter-balanced arm available. Wall and wall track mounting options.



## Ultra

Move components independently. Wall, track and desk mount options.



## Titan

Strong and versatile. Available in all our mounting options.

The Ultra 180 and 182 arms are protected by U.S. Patent 9,243,743

## Our Service Commitment

- Technical and customer service support from dedicated product specialists with over 30 years experience.
- 100% U.S.-based customer service.
- Two hour response time on all inquiries.



**Complete design and customization available on-site at our facility in Medford, Oregon.**

Visit [www.icwusa.com](http://www.icwusa.com)



Kingsley Building: Administration, Information Technology, Engineering and Manufacturing



Grumman Building: Assembly and Shipping



1487 Kingsley Drive  
Medford, Oregon USA 97504  
[www.icwusa.com](http://www.icwusa.com)

Call for information  
**Toll Free:** 800-558-4435  
**Phone:** 541-608-2824  
**Fax:** 541-608-2797



Watch our Range of Motion videos  
<https://www.youtube.com/icwusa>

**For International sales call:**  
+01 (541) 608-2824  
Office hours: 6 a.m. to 4:30 p.m.  
Pacific Time



[icwusa.com](http://icwusa.com)

